





# SHS-M42

Universal high-performance bi-metal bandsaw blade useful for cutting metals with a tensile strength up to 1000 N/mm<sup>2</sup>



-  LEVEL PRODUCT 1
-  GEOMETRY SHS
-  ≥ 8 mm
-  SIZES 6x0,9 - 80x1,6 mm

## Characteristics

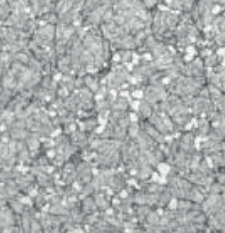
- Uncoated bi-metal blade
- Special SHS tooth setting designed to reduce cutting forces even on difficult materials
- Cutting edge made from **M42** high-speed steel with positive rake angle

## Applications

- Good cutting ability even on tool steel alloys
- Good cutting ability on non-ferrous metals such as aluminum, bronze, aluminum, copper, brass
- Good cutting ability on hardened steel with tensile strength up to 1000 N/mm<sup>2</sup>
- Applicable for variable work loads

## Advantages

- Suitable for machines that are not particularly rigid or rebuilt, even with lower belt tension
- Suitable when cutting varying sized materials for light industry



**SHS-M42**  
BI-METAL BANDSAW BLADE



# SHS-M42

WIDTH x THICKNESS		TPI (TEETH PER INCH)															
mm	inch	0,8/1,3	1,4/2	2,0/3	3,0/4	4,0/6	5,0/8	6,0/10	8,0/12	10,0/14	14,0/18	14	10	8	6	4	3
6x0,9	1/4x0,035									NS		NS	NS		LSS	LSS	
10x0,9	3/8x0,035									NS		NS	NS		LSS	LSS	
13x0,65	1/2x0,025							NS	NS	NS	NS	NS	NS		LSS	LSS	
13x0,9	1/2x0,035							NS	NS	NS		NS	NS	NS	LSS	LSS	LSS
20x0,9	3/4x0,035					PS/NS	NS	NS	NS	NS	NS	NS	NS				
27x0,9	1-1/16x0,035			HPS	PS/NS	PS/NS	PS/NS	NS	NS	NS					NS	PS	HPS
34x1,1	1-3/8x0,042		HPS	HPS	PS/NS	PS/NS	NS	NS	NS								
41x1,3	1-5/8x0,050		HPS	HPS	PS	PS/NS	NS										
54x1,3	2-1/8x0,050		HPS	HPS	PS	PS											
54x1,6	2-1/8x0,063	HPS	HPS	HPS	PS	PS											
67x1,6	2-5/8x0,063	HPS	HPS	HPS	PS												
80x1,6	3-1/8x0,063	HPS	HPS														
<b>CONTACT LENGTH</b>		600-1200	250-500	140-300	90-150	60-100	40-80	25-50	20-40	10,0-20	5,0-20	8,0-20	16,0-20	30-40	40-60	60-100	100-150

## Overview of materials

### SHS-M42

Construction steel, Automatic steel	Recommended
Carbon steel	Recommended
Hardened and tempered steel	Allowed
Hardened and tempered steel over 1200 N/mm <sup>2</sup>	Not Applicable
Case hardening steel, harmonic steel	Allowed
Bearing steel	Allowed
Hot tool steel	Allowed
Cold tool steel	Allowed
High-speed steel	Allowed
Ferritic stainless steel	Approved
Austenitic stainless steel	Allowed
Martensitic stainless steel	Allowed
Duplex and heat-resistant steel	Not Applicable
Cast iron	Recommended
Nickel alloys	Not Applicable
Titanium alloys	Not Applicable
Aluminium	Allowed
Copper alloys	Approved
Aluminium bronze	Approved

#### LEGEND

■ Recommended   
 ■ Approved   
 ■ Allowed   
 ■ Not Applicable