

M42 BACKPRO

High performance bi-metal bandsaw blade for use on profiles and tubes or any type of interrupted cutting process



- LEVEL PRODUCT 1
- GEOMETRY STC
- ≥ 20 mm
- SIZES 20x0,9 - 67x1,6 mm
- HONED

Characteristics

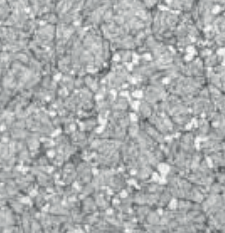
- Uncoated bi-metal blade
- Sharply honed **M42** high strength steel teeth on the cutting edge to reduce burr formation and extend blade life
- Reinforced tooth design for superior strength
- Special STC tooth setting for maximum resistance to breakage on profiled materials
- Edge in **M42** HSS with positive rake angle

Applications

- Metalworking with profiles and beams in structural steel for construction
- Complex metallic profiles even in non-ferrous metals
- Suitable for variable workloads

Advantages

- Extremely stable tooth design minimizing vibrations
- Reduced deburring process post cutting
- Minimized probability of blade breakage



M42 BACKPRO
BI-METAL BANDSAW BLADE



M42 BACKPRO

WIDTH x THICKNESS

TPI (TEETH PER INCH)

mm	inch	8,0/12	5,0/8	4,0/6	3,0/4	2,0/3
20x0,9	3/4x0,035	BRS				
27x0,9	1-1/16x0,035	BRS	BRS	BRS	BRS	BRS
34x1,1	1-3/8x0,042		BRS	BRS	BRS	BRS
41x1,3	1-5/8x0,050		BRS	BRS	BRS	BRS
54x1,6	2-1/8x0,063			BRS	BRS	BRS
67x1,6	2-5/8x0,063				BRS	BRS
CONTACT LENGTH		20-40	40-80	60-100	90-150	140-300

Recommended uses

- Structural steel
- Construction steel
- Thin/thick walled complex profiles
- Thin/thick-walled tubes