






# M42 BACKPRO SW

High performance bi-metal bandsaw blade on metal profiles and tubes, as well as on solid sections of high strength steel with tensile strength up to 1200 N/mm<sup>2</sup>



-  LEVEL PRODUCT 3
-  GEOMETRY SDF
-  ≥ 60 mm
-  SIZES 20x0,9 - 67x1,6 mm
-  HONED

## Characteristics

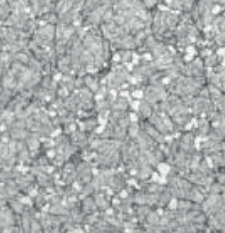
- Uncoated bi-metal blade
- Sharply honed **M42** high-strength steel teeth on the cutting edge to reduce burr formation and extend blade life
- Reinforced tooth design for superior strength
- Special SDF tooth setting for maximum resistance to breakage on profiled materials
- Edge in **M42** HSS with positive rake angle
- Aggressive and stable cutting edge
- Teething with increased spacing
- Measureable increase in productivity

## Applications

- Metalworking with profiles and beams in structural steel for construction
- Complex metallic profiles even in non-ferrous metals
- Applicable for variable workloads
- Solid sections, even of high-alloy high-resistance steel

## Advantages

- Extremely stable tooth design minimizing vibrations
- Reduced deburring process post cutting
- Minimized probability of blade breakage



**M42 BACKPRO SW**  
BI-METAL BANDSAW BLADE



# M42 BACKPRO SW

## WIDTH x THICKNESS

## TPI (TEETH PER INCH)

mm	inch	4,0/6	3,0/4	2,0/3
20x0,9	3/4x0,035	BAS		
27x0,9	1-1/16x0,035	BAS	BAS	BAS
34x1,1	1-3/8x0,042	BAS	BAS	BAS
41x1,3	1-5/8x0,050	BAS	BAS	BAS
54x1,3	2-1/8x0,050		BAS	BAS
54x1,6	2-1/8x0,063	BAS	BAS	BAS
67x1,6	2-5/8x0,063		BAS	BAS
<b>CONTACT LENGTH</b>		60-100	90-150	140-300

## Overview of materials

	M42 BACKPRO SW	M42 BACKPRO SW-PRIME
Construction steel, Automatic steel	Allowed	Allowed
Carbon steel	Allowed	Allowed
Hardened and tempered steel	Approved	Recommended
Hardened and tempered steel over 1200 N/mm <sup>2</sup>	Approved	Recommended
Case hardening steel, harmonic steel	Allowed	Approved
Bearing steel	Allowed	Approved
Hot tool steel	Allowed	Approved
Cold tool steel	Approved	Recommended
High-speed steel	Allowed	Approved
Ferritic stainless steel	Allowed	Allowed
Austenitic stainless steel	Allowed	Allowed
Martensitic stainless steel	Allowed	Allowed
Duplex and heat-resistant steel	Not Applicable	Not Applicable
Cast iron	Approved	Recommended
Nickel alloys	Not Applicable	Not Applicable
Titanium alloys	Not Applicable	Not Applicable
Aluminium	Not Applicable	Not Applicable
Copper alloys	Allowed	Allowed
Aluminium bronze	Allowed	Allowed

### LEGEND

■ Recommended   
 ■ Approved   
 ■ Allowed   
 ■ Not Applicable

## Recommended uses

- Structural steel
- Construction steel
- Tempered steel with tensile strength over 1200 N/mm<sup>2</sup>
- Wear-resistant steel
- Thin/thick walled complex profiles
- Thin/thick-walled tubes