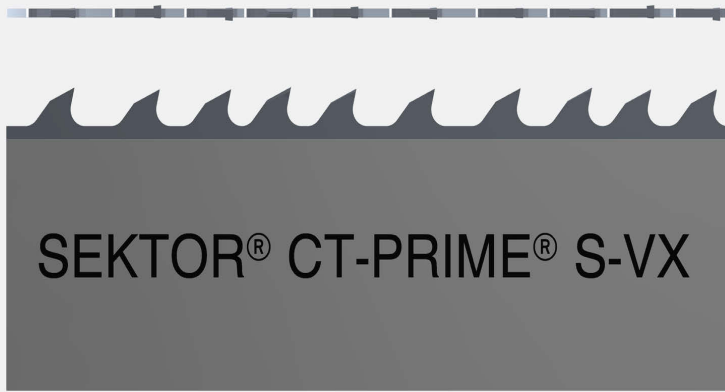


CT-PRIME[®] S-VX

VX series carbide bandsaw blade with minimum feeding resistance for hard materials difficult to cut even with heavy-duty machines



- LEVEL PRODUCT S
- GEOMETRY VX
- ≥ 360 mm
- SIZES 54x1,6- 80x1,6 mm
- HONED
- COATED

Characteristics

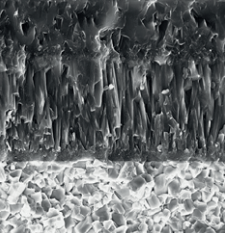
- Multilayer coated carbide blade
- Sharp carbide hone
- Heat resistant PVD edge for fast cutting
- Significant increase in blade life with sharp nanohardness of 35 gigapascal (GPa)
- Unset tooth base
- Asymmetric chip removal similar to tooth setting
- Increased anti-pinch cutting thickness
- VX variable taper ground tips
- VX tooth geometry with 9 chip producing sections
- VX6 and VX7 configurations with 6 and 7 teeth per group
- Can be used with low percentage emulsion coolants
- Minimum cutting resistance
- Maximum silence
- Clean surface finish

Applications

- Suitable for applications with high volume cutting capacity and reduced blade speed even on older model machines
- Primarily for use on all stainless steels or tool steel of any size
- Suitable for large ingots of tensioned stainless steel, nickel alloys and tempered tool steel with hardness above 450 HB or 1600 N/mm²

Advantages

- High power reserve maintained with medium to large size materials
- Increased productivity on materials with difficult workability
- PVD thermal barrier coating



CT-PRIME[®]
COATED CARBIDE BANDSAW BLADE



CT-PRIME[®] S-VX

WIDTH x THICKNESS

mm	inch	1,4/2	1/1,3	0,7/1
54 x 1,6	1-5/8 x 0,050	VX7		
67 x 1,6	2-1/8 x 0,063	VX7	VX7	
80 x 1,6	2-5/8 x 0,063	VX7	VX7	VX7
CONTACT LENGTH		360-720	600-1100	750-2000

Overview of materials



	CT-PRIME [®] S-VX	CT-PRIME [®] H-VX	CT-PRIME [®] P-VX	CT-PRIME [®] M-VX
Construction steel, Automatic steel	Green	Green	Blue	Green
Carbon steel	Green	Green	Blue	Green
Hardened and tempered steel	Blue	Blue	Yellow	Yellow
Hardened and tempered steel over 1200 N/mm ²	Yellow	Yellow	Blue	Yellow
Case hardening steel, harmonic steel	Blue	Green	Yellow	Blue
Bearing steel	Green	Green	Blue	Green
Hot tool steel	Blue	Yellow	Yellow	Blue
Cold tool steel	Green	Blue	Blue	Blue
High-speed steel	Blue	Blue	Blue	Blue
Ferritic stainless steel	Yellow	Blue	Yellow	Yellow
Austenitic stainless steel	Yellow	Yellow	Yellow	Yellow
Martensitic stainless steel	Yellow	Blue	Yellow	Yellow
Duplex and heat-resistant steel	Yellow	Yellow	Yellow	Yellow
Cast iron	Black	Black	Green	Black
Nickel alloys	Yellow	Blue	Yellow	Yellow
Titanium alloys	Yellow	Blue	Green	Blue
Aluminium	Black	Black	Black	Black
Copper alloys	Black	Black	Black	Black
Aluminium bronze	Black	Black	Black	Black

LEGEND

■ Recommended
 ■ Approved
 ■ Allowed
 ■ Not Applicable

Recommended uses

- Tempered steel with hardness index up to 1600 N/mm²
- Hot pressed tool steel
- High-speed steel
- Stainless steels
- Nickel and titanium alloys