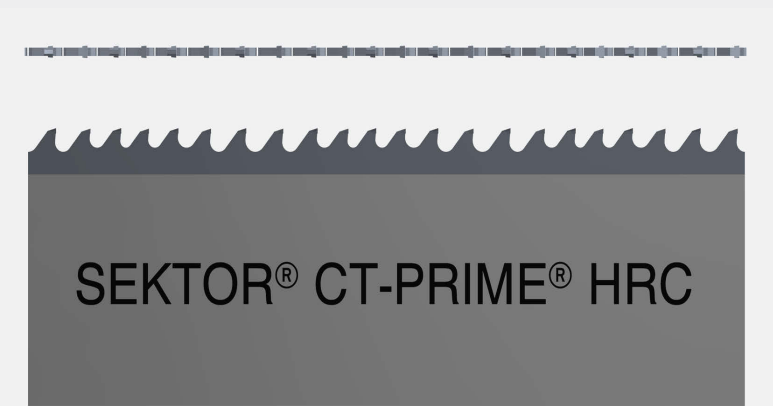


CT-PRIME[®] HRC

Carbide bandsaw blade developed for cutting tempered or chrome plated rods and steel with surface tempering



- LEVEL PRODUCT S
- GEOMETRY HRC
- ≥ 30 mm
- SIZES 34x1,1- 54x1,6 mm
- HONED
- COATED

Characteristics

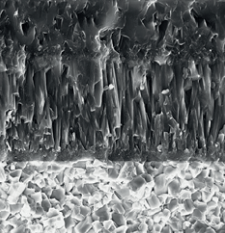
- Special multilayer coated carbide blade developed for cutting hardened surfaces up to 65 HRC
- Sharp carbide hone
- Heat resistant PVD edge for difficult cutting
- Maximum durability on tempered surfaces and soft core with nanohardness over 35 gigapascal (GPa)
- HRC tooth geometry
- Negative cutting strips
- Precise cutting with no burr formation
- Clean surface finish

Applications

- Tempered chrome rods
- Chromed rods
- Induction tempered steel

Advantages

- Maximized capabilities on appropriate materials
- Strong and tenacious geometry for maximum resistance to abrasive wear
- PVD thermal barrier coating



CT-PRIME®
COATED CARBIDE BANDSAW BLADE



CT-PRIME® HRC

WIDTH x THICKNESS

TPI (TEETH PER INCH)

mm	inch	3,0/4	2,0/3
34 x 1,1	1-5/8 x 0,050	HRC	
41 x 1,3	2-1/8 x 0,050	HRC	HRC
54 x 1,6	2-1/8 x 0,063	HRC	HRC
CONTACT LENGTH		30-150	150-300

Overview of materials



	CT-PRIME® HRC (COATED)	CT-APEX® HRC (UNCOATED)
Construction steel, Automatic steel	Approved	Approved
Carbon steel	Approved	Approved
Hardened and tempered steel	Approved	Allowed
Hardened and tempered steel over 1200 N/mm²	Allowed	Allowed
Case hardening steel, harmonic steel	Approved	Allowed
Bearing steel	Approved	Approved
Hot tool steel	Allowed	Allowed
Cold tool steel	Approved	Allowed
High-speed steel	Allowed	Allowed
Ferritic stainless steel	Not Applicable	Not Applicable
Austenitic stainless steel	Not Applicable	Not Applicable
Martensitic stainless steel	Not Applicable	Not Applicable
Duplex and heat-resistant steel	Not Applicable	Not Applicable
Cast iron	Approved	Allowed
Nickel alloys	Not Applicable	Not Applicable
Titanium alloys	Not Applicable	Not Applicable
Aluminium	Not Applicable	Not Applicable
Copper alloys	Not Applicable	Not Applicable
Aluminium bronze	Not Applicable	Not Applicable

LEGEND

■ Recommended
 ■ Approved
 ■ Allowed
 ■ Not Applicable

Recommended uses

- Tempered chrome steel
- Chromed steel
- Induction tempered steel
- Cast iron
- Cold pressed tool steel
- Steel for bearings
- Case hardened steel