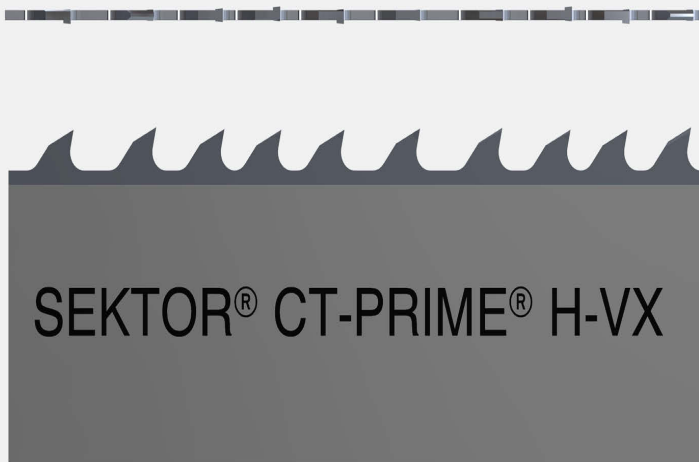


# CT-PRIME<sup>®</sup> H-VX

VX series carbide bandsaw blade with minimum feed resistance for hard and extra-hard materials that are difficult to cut even with heavy duty machines



-  LEVEL PRODUCT S
-  GEOMETRY VX
-   $\geq 360$  mm
-  SIZES 54x1,6- 80x1,6 mm
-  HONED
-  COATED

## Characteristics

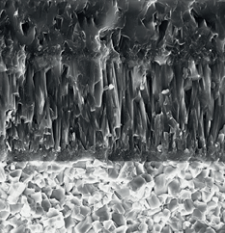
- Multilayer coated carbide blade
- Sharp carbide hone
- Heat resistant PVD edge for fast cutting
- Significant increase in blade life with sharp nanohardness of 35 gigapascal (GPa)
- Unset tooth blade
- Asymetric chip removal similar to tooth setting
- Maximum increased cutting thickness in the VX geometry carbide series
- VX variable taper ground tips
- VX tooth geometry with 11 chip producing sections
- VX8 and VX9 configurations with 8 and 9 teeth per group
- Can be used with low percentage emulsion coolants
- Minimum cut resistance
- Maximum silence
- Clean surface finish

## Applications

- Suitable for applications with high cutting volume and reduced blade speed even on older machines
- Indicated for primary use on steel and alloys with hardness on average higher than 350 HB or 1200 N/mm<sup>2</sup>
- Suitable for large stainless steel ingots, duplex and heat-resistant steel, special alloys and tempered tool steel over 500 HB as well as wear-resistant manganese steels with hardness over 500 HB or 1900 N/mm<sup>2</sup>

## Advantages

- High power reserve maintained with medium to large size materials
- Increased productivity on materials with difficult workability
- PVD thermal barrier coating



**CT-PRIME®**  
COATED CARBIDE BANDSAW BLADE



## CT-PRIME® H-VX

### WIDTH x THICKNESS

| mm                    | inch          | 1,4/2   | 1/1,3    | 0,7/1    |
|-----------------------|---------------|---------|----------|----------|
| 54 x 1,6              | 1-5/8 x 0,050 | VX8     |          |          |
| 67 x 1,6              | 2-1/8 x 0,063 | VX8     | VX8      |          |
| 80 x 1,6              | 2-5/8 x 0,063 | VX8     | VX8      | VX8      |
| <b>CONTACT LENGTH</b> |               | 360-720 | 600-1100 | 750-2000 |

### Overview of materials



|   | CT-PRIME®<br>H-VX | CT-PRIME®<br>P-VX | CT-PRIME®<br>M-VX | CT-PRIME®<br>S-VX |
|---|-------------------|-------------------|-------------------|-------------------|
| Construction steel, Automatic steel                     | Green             | Blue              | Green             | Green             |
| Carbon steel  | Green             | Blue              | Green             | Green             |
| Hardened and tempered steel                             | Blue              | Yellow            | Yellow            | Blue              |
| Hardened and tempered steel over 1200 N/mm <sup>2</sup> | Yellow            | Blue              | Yellow            | Yellow            |
| Case hardening steel, harmonic steel                    | Green             | Yellow            | Blue              | Blue              |
| Bearing steel   | Green             | Blue              | Green             | Green             |
| Hot tool steel  | Yellow            | Yellow            | Blue              | Blue              |
| Cold tool steel   | Blue              | Blue              | Blue              | Green             |
| High-speed steel  | Blue              | Blue              | Blue              | Blue              |
| Ferritic stainless steel                                | Blue              | Yellow            | Yellow            | Yellow            |
| Austenitic stainless steel                              | Yellow            | Yellow            | Yellow            | Yellow            |
| Martensitic stainless steel                             | Blue              | Yellow            | Yellow            | Yellow            |
| Duplex and heat-resistant steel                         | Yellow            | Yellow            | Yellow            | Yellow            |
| Cast iron   | Black             | Green             | Black             | Black             |
| Nickel alloys   | Blue              | Yellow            | Yellow            | Yellow            |
| Titanium alloys   | Blue              | Green             | Blue              | Yellow            |
| Aluminium   | Black             | Black             | Black             | Black             |
| Copper alloys   | Black             | Black             | Black             | Black             |
| Aluminium bronze  | Black             | Black             | Black             | Black             |

#### LEGEND

■ Recommended   
 ■ Approved   
 ■ Allowed   
 ■ Not Applicable

### Recommended uses

- Tempered steel with hardness index up to 1900 N/mm<sup>2</sup>
- Hot and cold pressed tool steel
- High-speed steel
- Stainless steels